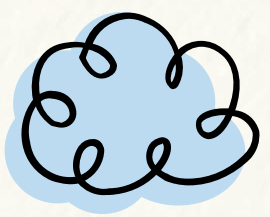
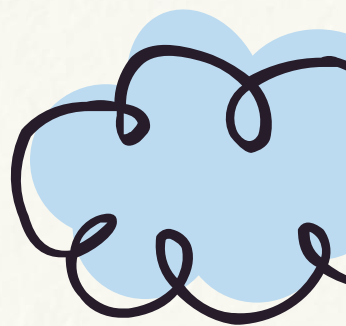
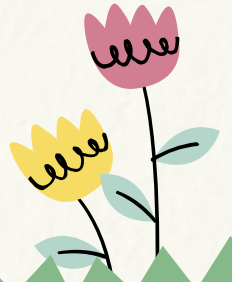
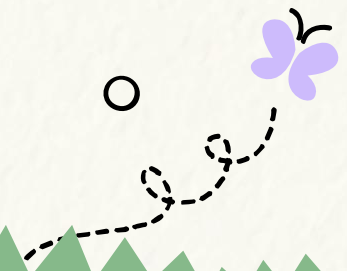


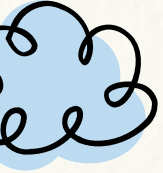
# ESSER III



Gary Lighthouse Primary Academy  
June 21, 2021



# Our Approach



01

## Healthy Relationships

Providing a culture of collaboration & empowering all members with engaging programs.

02

## The Primary Promise

Use of materials and supplies to make sure all scholars have literacy foundation & SE skills.

03

## The Purpose of School

Prepare scholars to activate their hopes & dreams through experiences.

04

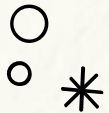
## Growth Mindset

Continuously to grow and to support the learning loss and achievement gaps.

05

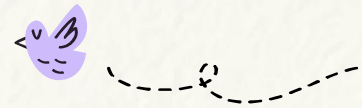
## Academics

Creating a joy of learning with our students and all stakeholders with materials and supplies for all.





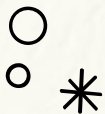
# Why we do the work we do...



**Impact of Instructional Support:** We need to make sure we support our students with the loss of instructional time during the pandemic, and to address any learning gaps.

**Impact of Instructional Materials:** We need to make sure we provide our students and staff with the best supplies that will support high engagement, and student learning every day.

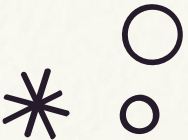
**Impact through Experiences:** We need to provide experiences for our students so they can have as many opportunities to continuously learn and grow from.



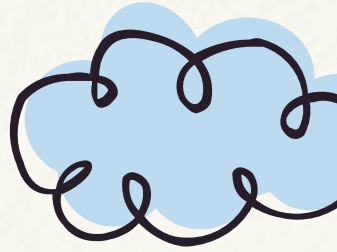
# Impact of Instructional Support



- Classroom Aide in every classroom
  - Supporting students and classroom teachers day to day instruction.
  - Supporting growth and development of Aides who want to become classroom teachers.
- Reading Specialist
  - Support students pushing in and pulling small group.
  - Resource for classroom teachers.
- Building Sub
  - Coverage for classrooms to make sure instruction continues, and every minute is used.
- Social Worker
  - School Social Worker will help mitigate student absences and tardies which cause a loss of learning for our students.

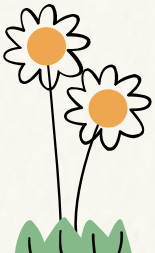
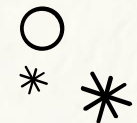
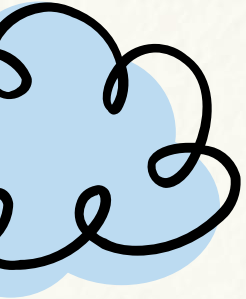


# Impact of Instructional Supplies



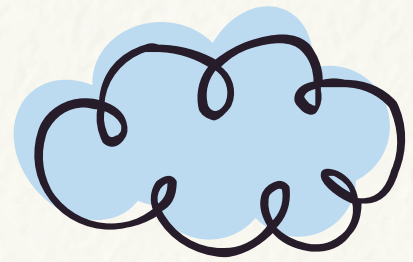
- Touch Math
- Scholastic RISE
- SRA Reading Lab
- Essential Skills
- Lakeshore Learning (ELL)
- Accelerated Reader Books
- Classroom Printers
- BriteLink (SPED)
- mClass Intervention
- Grab and Go Packs
- Literacy and Math Board Games for Classroom
- Assessment/Progress Monitoring Software

- Materials to use daily for to support high engagement and rigorous instruction.
- Materials support the Primary Promise, and to continuously promote a joy of reading.

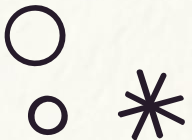




# Healthy Relationships



- Field Experiences
  - inside the school
  - outside the school
- Parent and Family Support
  - Parent and Family Workshops to support student learning and SEL





Questions?